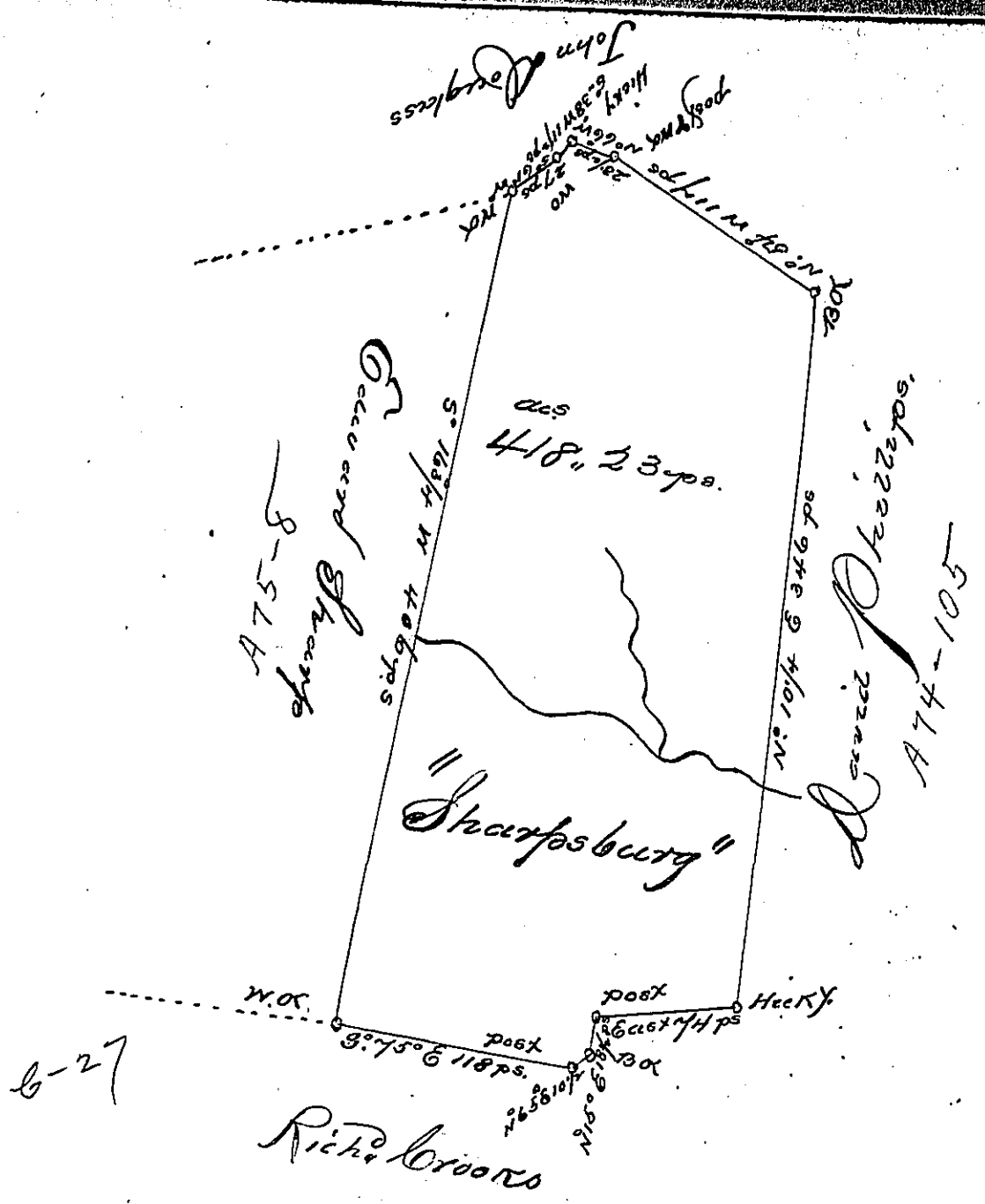


P59-414
1897



A Draught of a survey called "Sharpsburg" situated on the waters of Peters Creek in Washington County. Containing 418 acs. 23 ps. and 2^d usual allow^{ce} for Highways &c. executed March 2^d 1st 1786, in Pursuance of a Warrant granted to Edward Sharp for 400 acs. dated Feby 1st 1786.

Bresley Nevill }
Matthew Ritchie } D. J. S.

Saml. Broadhead Esqr.
J. Genl.

Now Mefflin Township Allegheny County.

IN TESTIMONY that the above is a copy of the original remaining on file in the Department of Internal Affairs of Pennsylvania; made conformably to an Act of Assembly approved the 16th day of February, 1833, I have hereunto set my Hand and caused the Seal of said Department to be affixed at Harrisburg, this first day of January 1901.

James W. Latta
Secretary of Internal Affairs.